



THE 5 BIGGEST THREATS

TO ACCURACY IN PROJECT DRAWINGS

WHEN USING **3D LASER SCANNING**

By Shawn Wachter

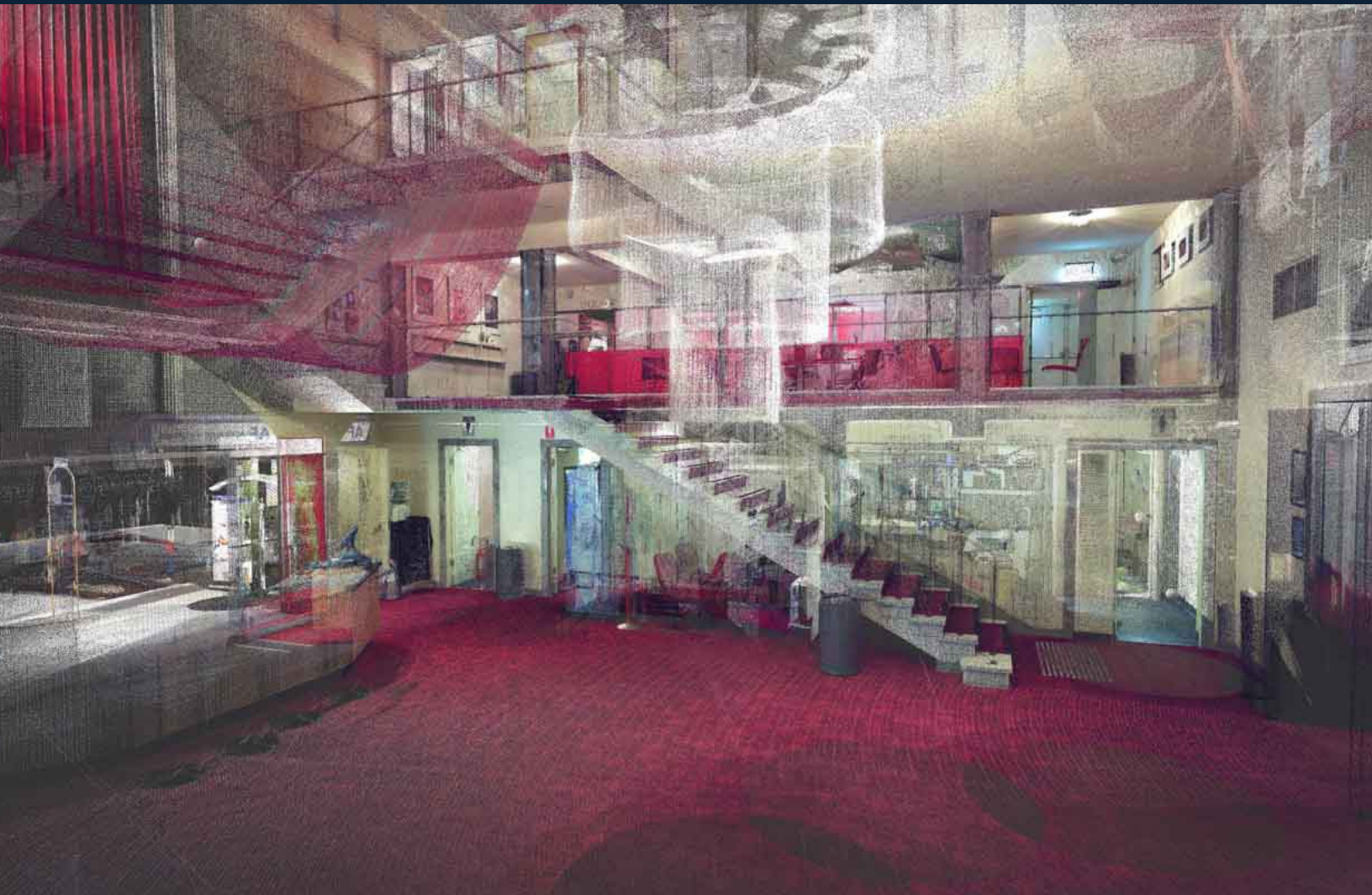


Unnecessary change orders and construction delays start with bad data.

This is true even when using cutting-edge technology, such as 3-D laser scanners. Great technology is only as good as the people operating it.

We know the pitfalls. We've seen them before. And we're here to make sure you don't run into them on your client's project.

Here are the 5 biggest threats to accuracy in project drawings, that are often overlooked:





1. SKIMPY OVERLAP

Improper overlap compromises precision. This is why scanning in every doorway and room transition is important to connect the scans. If you do not scan each doorway between rooms, programs like scene and cyclone can not generate precise point-to-point registration. However, as best practice, we always provide at least 50% overlap between scans.



2. TRUSTING TECHNOLOGY TOO MUCH

When interior elevations are needed, always hand-measure outlets, data receptacles, switches, etc., and make notes of locations. Oftentimes furniture and other obstructions block full views of the walls and some of these things can be missed.



3. SKIPPING STEPS

Always remember to scan at least once in every room — no matter how small. This makes sure all wall thicknesses are verified.

4. TRUSTING THE SCANNER TO SEE IT ALL

Set up multiple scan positions to get all angles of the structure without obstructions.

Remember, the scanner can only scan what it can see, so make sure you are placing the scanner strategically.





5. IMPROPER RESOLUTION SETTINGS

When choosing settings for a type of scan, the smaller the area, the lower you can set the resolution. At Wachter Designs, we set the RTC 360 on low resolution for small interior rooms, medium resolution for large indoor rooms, and high resolution for building exteriors. The farther away you are from what you are scanning, the higher the resolution needs to be.

Nothing derails work on improvement projects like inaccurate as-built surveys or drawings. We use cutting-edge LiDAR technology and expert oversight to capture every last detail and keep your projects on track.

With the right partner in place, you can focus on leading your project forward knowing it's being built on laser-accurate, expertly rendered drawings of the existing structure created by competent senior drafters. The combination gives you the most accurate survey possible for your projects.

At Wachter Design 3D Laser Scanning Services, our clients get decades of good old-fashioned human experience to go along with our cutting-edge 3D digital laser scanning services.

**SPECIAL
OFFER**

Are you running into challenges and would like one of our experts to look at them? Mention this article and get a no commitment 15-minute "Expert Input Session"

[SCHEDULE A MEETING TODAY](#)